



Ontario Holsteins Judging Program



Judging Clinics

- Open to all interested dairy people of any age that would like to learn more about the evaluation and comparison of dairy cattle
- First step for people to gain interest in becoming an official judge
- Designed to educate 4-H, Holstein members and Judges
- Educational segment for 4-H and Holstein members and training/development segment for future and current judges

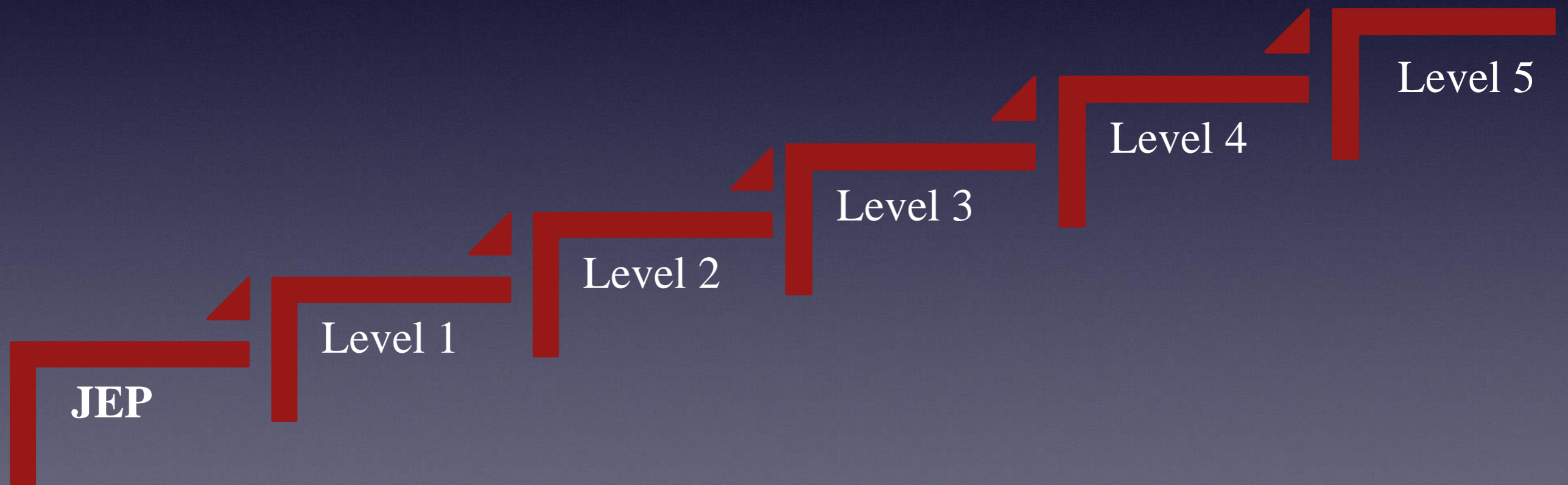


Judges Entrance Program (JEP)

- After attending a judging clinic/workshops and indicating they would like to become a judge, judges will be sent invitations to attend all future judging clinics and workshops
- May be asked to give reasons
- Minimum age 22
- Judging clinics and workshops will be specifically designed to develop judges and provide them with training to aid in their advancement



Official Judges' Levels and Advancement



Level 1

- Judges must have two (2) positive scores out of three (3) years in the Entrance program and give reasons to advance to Level 1
- The judge must be 25 years old in the year that they would attain Level 1
- The judge must attend an interview with the Judges Committee prior to being approved to advancement to the Level 1 (Interview location will be announced)
- The judge will be asked a series of questions regarding their desire to become a judge and may be asked to give the committee a set of reasons
- Level 1 judges will select 2 or 3 mentors from the mentor list and ask them to attend a show they officiate to provide feedback and submit a mentor assessment report
- Judges at this Level will be considered for judging 4-H club shows



Level 2

- Judges must maintain two (2) positive scores out of three (3) years at Level 1 to advance to Level 2
- The mentor assessment reports and show activity reports will be used for consideration to advance to Level 2
- The judges will also be assessed on their experience and ability to give reasons
- Level 2 judges will continue to select mentors from the mentor list to assess them at shows that they judge
- The judges at this level will be considered for judging 4-H County Shows and smaller county shows



Level 3

- Judges must obtain two (2) positive scores out of three (3) years at level 2 to advance to Level 3
- Judges may be interviewed for advancement to Level 3
- The mentor assessment reports and show activity reports will also be used for consideration to advance to Level 3
- Judges will be analyzed on improvement and consistency from experience and from clinic results
- If interested you may be asked to mentor a level 1 or level 2 judge
- Level 3 judges will be considered for judging County Holstein Shows, 4-H Championship Shows and some International Judging Assignments



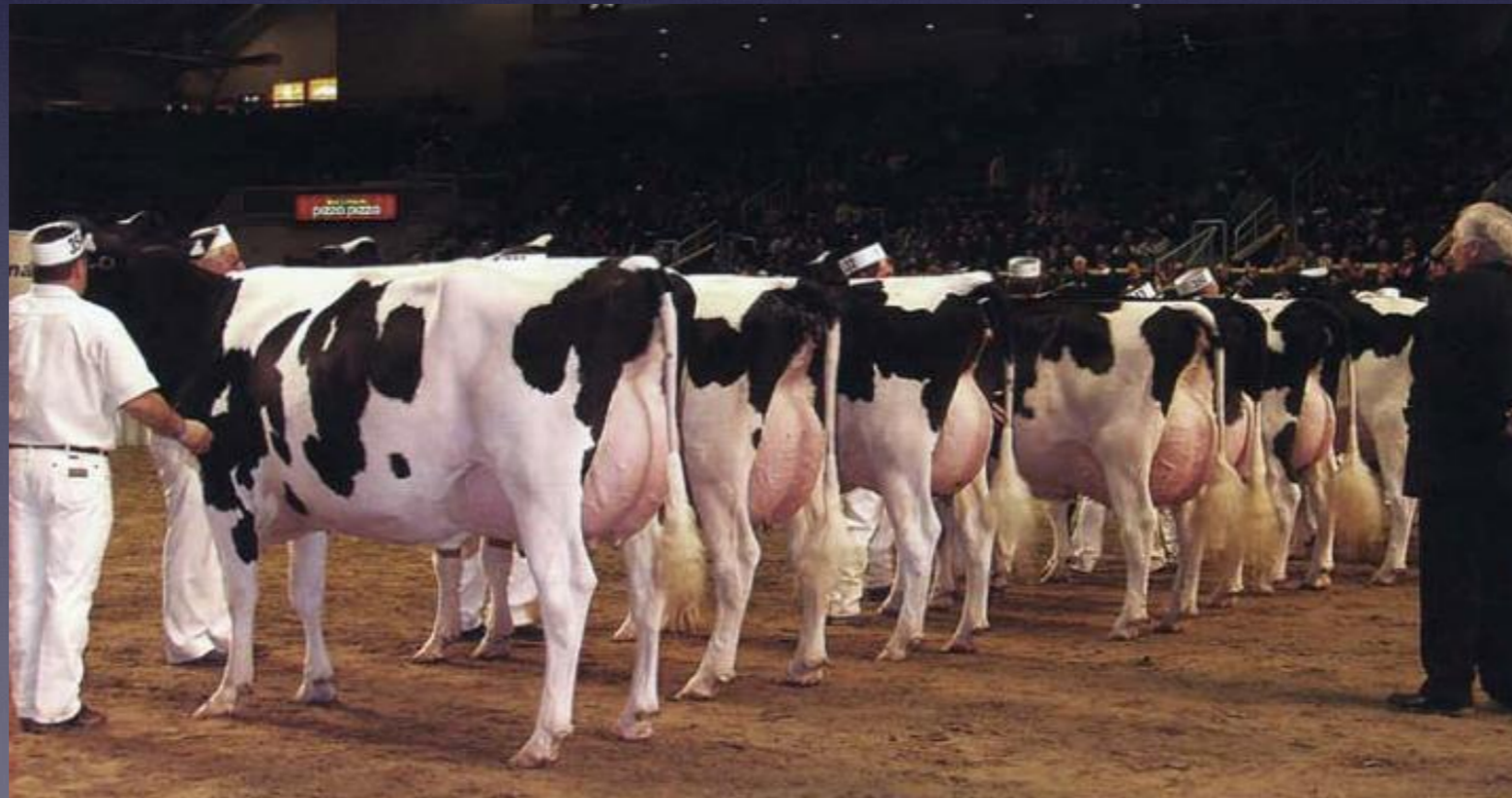
Level 4

- Judges must maintain two (2) positive scores out of three (3) years in Level 3 Judging School to advance to Level 4
- Judges will be analyzed on improvement and consistency in judging from experience and from clinic results
- If interested you may be asked to mentor a level 1 or level 2 judge
- The judges at this level will be considered to judge County Holstein Shows, 4-H Championship Shows, Regional Championship Shows as well as National and International Shows



Level 5

- Judges that have attained the highest status through officiating at all levels of shows domestically and internationally and upon appointment by the judges committee
- may be asked to mentor a level 1 or level 2 judge



Removal From List

- Non Attendance at clinics and workshops
- Judging inactivity
- Consistent lack of show reporting
- Unable to advance
- Disciplinary Reasons
- Age – 65
- Change of Address
- Self Removal



Mentors



Mentors

- The addition of a mentor component to the judging program will be an invaluable asset to our judges going forward
- Experienced judges from the mentor list may be asked to mentor judges to help them excel
- The mentors will be asked to view the judges that seek help at the shows they officiate
- Level 1 and 2 judges will be asked to select 2 or 3 mentors from the list of mentors



Mentors cont'd

- The mentor would attend the show and give feed back to the judge after the show, and submit an assessment report to the committee
- The assessment report will be used by the Judging Committee to help assist judges in areas needed to enhance growth
- The assessment report will also be used to build a history and profile for judges
- Mentor assessment information will be used as a tool for level advancement. **Important to submit



Mentor Assessment Report (example)

Judge _____ Mentor _____ Date _____ Show _____

Arrived on Time (Yes No) Comments _____

Dressed appropriately (Yes No) Comments _____

Speaks clearly (Yes No) Comments _____

Use of Terminolgy (Needs improvement Good Excellent)
Comments _____

Effective Reasons (Needs improvement Good Excellent)
Comments _____

Conformation Placings (Needs improvement Good Excellent)
Comments _____

Showmanship Placings (Needs improvement Good Excellent)
Comments _____

Usage of time (Needs improvement Good Excellent)
Comments _____

Ring mannerism (Needs improvement Good Excellent)
Comments _____

Professionalism (Needs improvement Good Excellent)
Comments _____



Judges Profile





Judge Profile

Brian Carscadden

1 Semex Way Drive, Guelph, Ontario

Cell : 519-123-4567

E-mail : bcarscadden@semex.com

Judge Ranking – Level 5

- Promoted to Level 5 - 2016 - attained the highest status through officiating all levels of shows domestically and internationally and upon appointment by the judges committee

History

- 2005
 - Interviewed by Ontario Judging Committee and promoted to Level 1
 - Officiated at Beaverton 4-H Achievement Day, 27 exhibitors
 - Officiated at Blackstock Fair, 18 exhibitors
- 2007
 - Promoted to Level 2
 - Officiated Durham West 4-H Championship Show, 35 exhibitors
 - Officiated at Middlesex County Show, 75 animals exhibited
- 2010
 - Promoted to Level 3
 - Officiated Wellington/Dufferin Black and White Show, 100 animals exhibited
 - Officiated Northumberland County Black and White Show, 120 animals exhibited
- 2013
 - Promoted to Level 4
 - Officiated at Calgary Spring Show, 110 animals exhibited
 - Officiated Argentina National Show and judging school/PowerPoint presentation to 60 judges and breeders

Biography

- Sire Analyst at Semex Alliance
- Officiated at the World Dairy Expo and Royal Agricultural Winter Fair
- Conducted numerous judging seminars and officiated many National Holstein Shows worldwide
- Coaches Baseball and Hockey

Biography

- Farm and cattle accomplishments
- Major achievements
- If an industry person- job description with your company
- Education
- Family and Other Interests
- Shows officiated at
- An overview of what makes the judge accomplished



What is the role of the Ontario Branch and the Judging Committee?



Roles of Ontario Branch and Judging Committee

- Responsible for Judging Schools
- Responsible for Judging Workshops
- Responsible for compiling and creating Judges profile information
- Judging committee members and Branch field staff are working with various organizations and show committees to promote Ontario Holstein Judges to officiate at all levels of shows
- Committed to secure judging opportunities for all judges at 4-H level, breeder cups, county shows, and championship level shows
- Make recommendations to Holstein Canada for the National Judges List





Holstein Canada Judging Program

Holstein Canada Judging Program

- Organizes a National Judging School every 3-4 years
- Organizes a National workshop to train judges in a variety of topics that judges experience Nationally and Internationally. The workshops coincide with the cattle evaluation school
- Works with provincial branches to build a list of judges that can officiate at National sponsored shows and International shows
- Promotes and supports the use of Canadian judges across Canada and internationally



Summary

- Programs to help our judges attain their full potential in cattle judging and reason giving
- Workshops that will train judges in all current topics pertaining to judging
- Help place judges in assignments that will develop their growth in judging
- Important that Judging activity reports and mentor assessment reports are submitted going forward
- Give positive support and training to help our judges continue to be the "Best in the World"



Questions?

